

**NOTICE OF INTENT TO APPLY FOR GRANT FUNDS  
TYLER COUNTY, TEXAS**

Tyler County is submitting the following application to the Texas General Land Office for funding under the Hurricane Harvey CDBG-MIT Hazard Mitigation Grant Program (HMGP) Supplemental fund.

**SCOPE OF WORK**

The proposed project includes flood and drainage improvements and mitigation action throughout the Wolf Creek watershed and a portion of the Neches River watershed in the north east portion of Tyler County.

Project sites include:

- CR 3570 – Road and drainage improvements (approx. four miles)
- CR 3430 – Drainage mitigation – new 60’ span bridge
- CR 3050 – Drainage mitigation – culvert improvement and erosion control
- CR 3910 – Drainage mitigation – new 60’ span bridge
- Woodland Street – Drainage improvements – culvert improvement and erosion control
- CR 3709 – Drainage improvements – culvert improvement and erosion control
- Moot Moore Road - Drainage improvements – culvert improvement and erosion control
- CR 3560 – Drainage improvements – culvert improvement and erosion control
- CR 3550 – Drainage improvements – culvert improvement and erosion control
- CR 3265 – Drainage improvements – culvert improvement and erosion control
- CR 3266 - Drainage improvements – culvert improvement and erosion control
- CR 2900 - Drainage improvements – culvert improvement and erosion control
- CR 4400 - Drainage improvements – culvert improvement and erosion control
- CR 2975 - Drainage improvements – culvert improvement and erosion control
- Timber Road 21 - Drainage improvements – culvert improvement and erosion control
- CR 3660 - Drainage improvements – culvert improvement and erosion control

**BUDGET**

Construction	\$ 5,278,280.00
Engineering	\$ 791,742.00
Administration	\$ 365,000.00
<b>TOTAL PROJECT COST</b>	<b>\$ 6,435,022.00</b>

**FUNDING SOURCES**

Harvey CDBG-MIT Funds	\$ 6,435,022.00
-----------------------	-----------------

**MAPS**

See attached project location map.

**BENEFICIARIES**

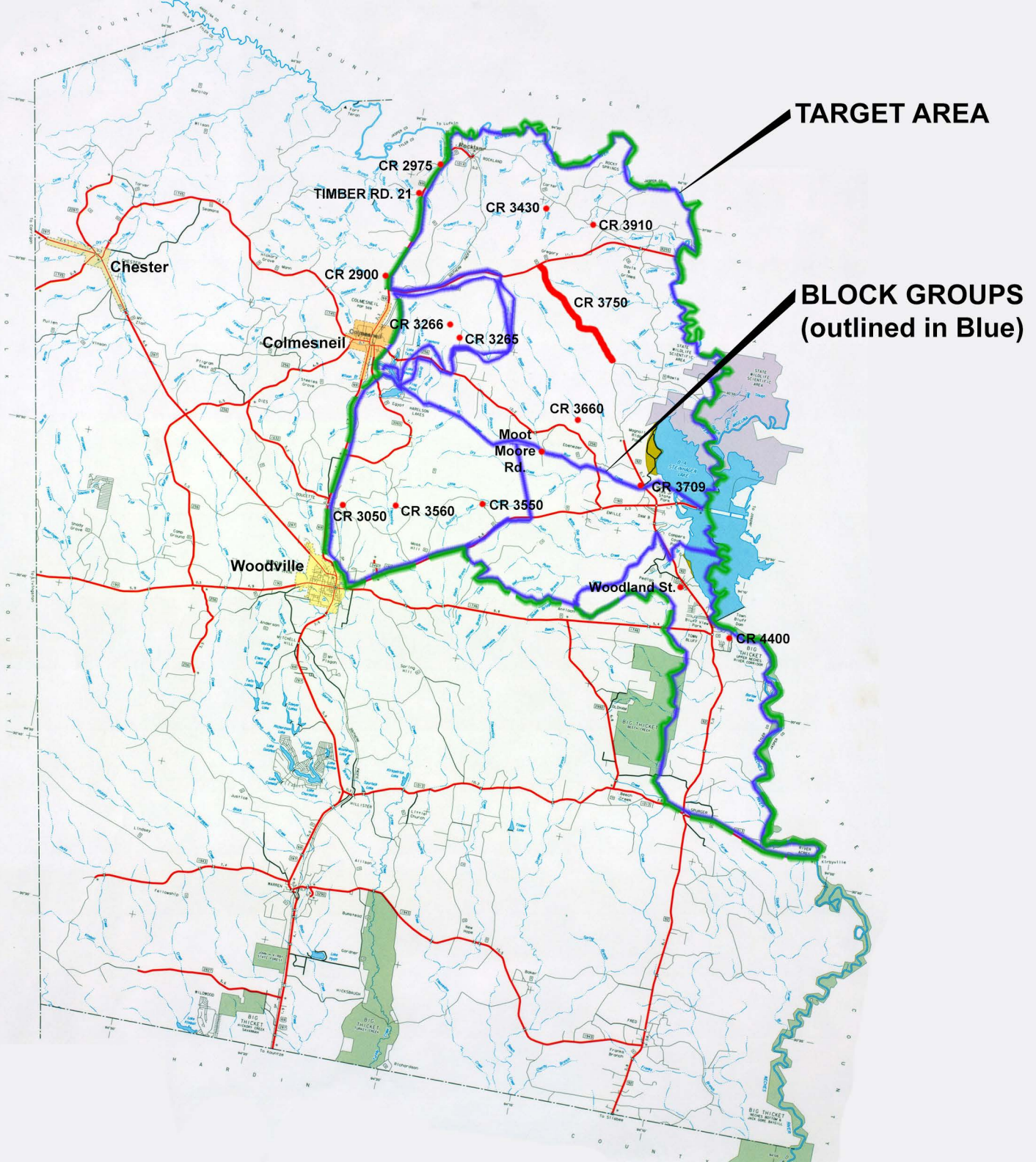
The project impact area benefits the Wolf Creek watershed and a portion of the Neches River watershed located in the north east portion of Tyler County.

Total population	4,325
Low to Moderate Income persons (LMI)	2,540
Low to Moderate Income %	58.73%

**PUBLIC COMMENTS**

The County will receive public comments related to this application through March 16, 2021. The application information is available for review by contacting the office of Tyler County Precinct 3 Commissioner Mike Marshall. Comments in writing can be delivered to the Tyler County Precinct 3 Commissioner's Office located at 205 N. Charlton Street in Woodville, Texas. For further information or to provide verbal comments, please contact County Commissioner Mike Marshall at 409-283-7623.

Para obtener una copia en español, comuníquese con County Commissioner Mike Marshall al 409-283-7623.



PROJECT LOCATIONS —



GOODWIN · LASITER · STRONG  
ENGINEERING · ARCHITECTURE · INTERIOR DESIGN · SURVEYING

**GOODWIN-LASITER-STRONG**  
TBPE FIRM 043  
1609 S. Chestnut, Suite 202 Lufkin, TX 75901



©2021 ALL RIGHTS RESERVED BY GOODWIN-LASITER, INC. UNAUTHORIZED USE OR REPRODUCTION IS PROHIBITED WITHOUT WRITTEN CONSENT FROM GOODWIN-LASITER, INC.

DATE 1-25-21	DRAWN PGO	APPROVED PGO	SCALE NOTED	JOB NO. 203MIT
-----------------	--------------	-----------------	----------------	-------------------

**GLO MIT Program Appl.**  
Precinct 3  
Tyler County, Texas  
Project Location Map



**L1**